

Insights Discovery Transformational Leadership Profile (IDTL)

This transformative leadership profile harnesses the power of the Insights colour energies methodology, empowering leaders to unlock their full potential. Leaders gain profound insights into their unique leadership style, and are challenged to improve the way they support diverse teams across their organisation.

It helps leaders to:

- Understand and identify different leadership styles and their own preferences
- Exercise agility to shift between different leadership styles as the situation requires
- Realise how others perceive and experience their leadership preferences
- Identify their strengths and blind spots
- Adapt their overall approach to motivate and inspire within a diverse organisation
- Influence stakeholders in a positive way
- Inspire people around them to excel, even during the most challenging of times

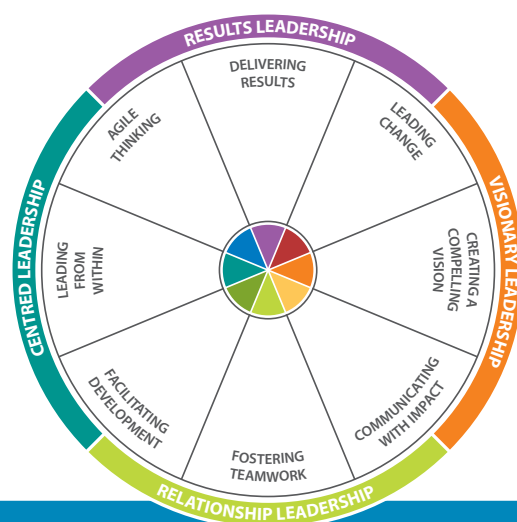
How it works

The Insights Discovery Transformational Leadership profile can complement existing leadership frameworks and integrate with new or established programmes.

The profile leverages the language of colour energies to empower leaders to examine their effectiveness through eight dimensions of leadership.

Leaders can explore all eight dimensions or just those most relevant to their development journey and career path.

Geared towards high potential employees, new leaders and seasoned executives, the IDTL profile is the next level of the Insights leadership journey that begins with Insights Discovery and Leadership Effectiveness, and accelerates with the Self Aware Leader programme.



Get in touch

To find out more about how we can help you get the very best from your leaders, contact us at www.insights.com.